

PRESIDENT
R. Gerald Turner

**Associate Vice President for
Access and Equity
Executive Assistant to the President**
Beth Wilson

Executive Assistant
Mary Jane Johnson



**PROVOST AND VICE PRESIDENT
FOR ACADEMIC AFFAIRS**

Paul W. Ludden

Assistant to the Provost
Carolyn Jeter

Associate Provost
Linda Eads

Associate Provost
Harold W. Stanley

**SMU-in-Plano Campus
Director**
Kate Livingston

**Dean of Edwin L. Cox
School of Business**
Albert W. Niemi Jr.

Dean of Dedman College
William M. Tsutsui

Dean of Lyle School of Engineering
Geoffrey C. Orsak

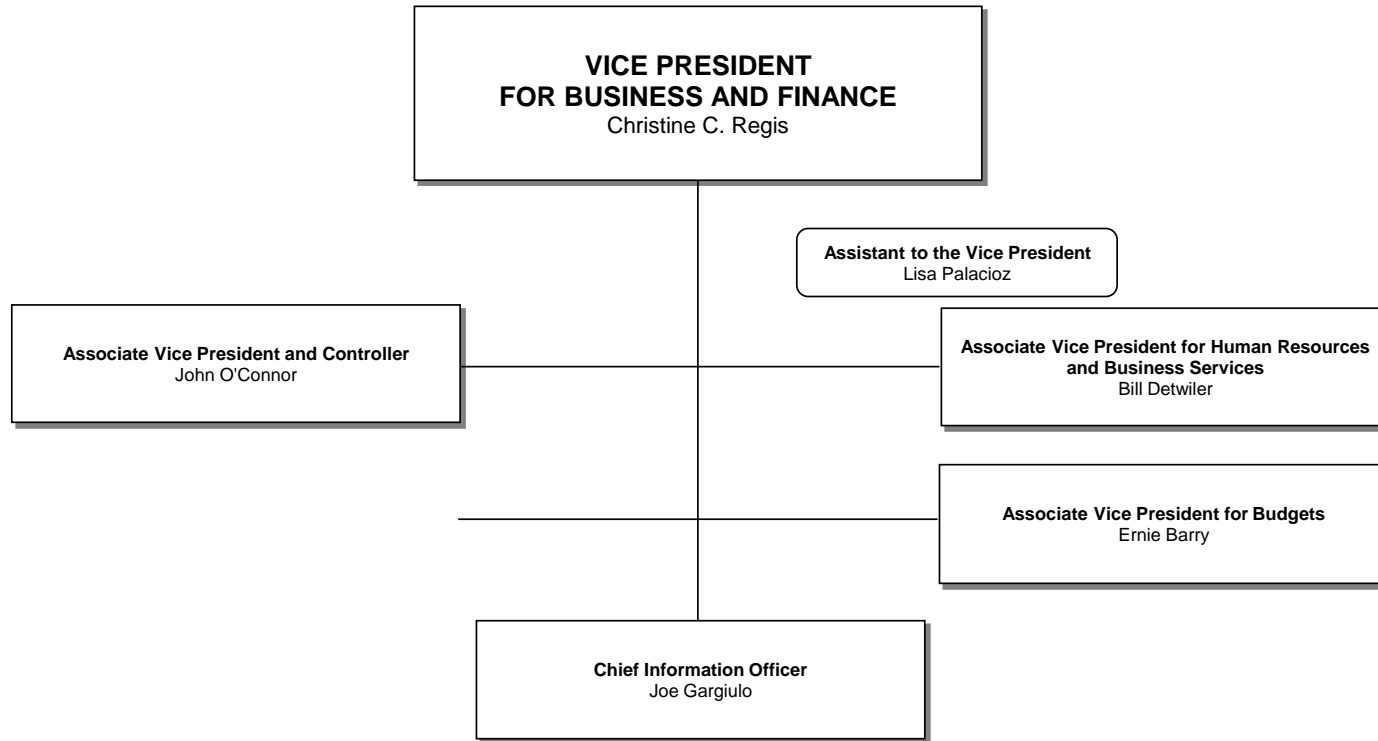
Dean of Meadows School of the Arts
José Antonio Bowen

**Dean of Annette Caldwell Simmons School of
Education
and Human Development**
David J. Chard

Dean of Dedman School of Law
John B. Attanasio

**Dean and Director,
Central University Libraries**
Gillian M. McCombs

Dean of Perkins School of Theology
William B. Lawrence





**GENERAL COUNSEL,
VICE PRESIDENT FOR LEGAL AFFAIRS
AND GOVERNMENT RELATIONS,**



**VICE PRESIDENT FOR DEVELOPMENT
AND EXTERNAL AFFAIRS**
Brad E. Cheves

Director, Leadership Gifts
Heather Shaw

Financial Officer
Yvette Castilla

**Assistant to the Vice President for
Strategic Affairs**
Robert A. Bucker

**Executive Director of the Center for
International and Global Studies**
M. Scott Brantley

**Assistant Vice President for
University Development**
Pam Conlin

**Associate Vice President and
Executive Director of Public Affairs**
Patricia LaSalle

